

[hankooktireusa.com](http://hankooktireusa.com)



## ***Dynapro HP2***

***High-Performance All-Season ability for SUVs,  
Crossover Vehicles and Light Trucks***







# Contents

---

**Concept**

**Pattern Design**

**Design Features**

**Technical Presentation**

**Test Results**

**Available Sizes**

Concept



## ***Dynapro HP2***

***High-Performance All-Season  
ability for SUVs, Crossover  
Vehicles and Light Trucks***

- High-Performance All-Season
- SUV, Crossover Vehicle and Light Truck sizes
- Non-Directional
- Exceptional Wet & Dry Braking and Handling
- Low noise
- Improved Treadwear
- Low Rolling Resistance for Improved Vehicle Fuel Efficiency
- UTQG 640/A/A

***Dynapro HP2***

**Hankook**  
driving emotion



*Pattern Design*



**Dynapro HP2**

**Hankook**  
driving emotion

## Design Features

### Provides excellent winter condition performance

#### Optimized 4-Channel Circumferential Grooves

Deliver outstanding water channeling capability to help resist hydroplaning and improving wet condition performance.



#### High Stiffness Center Rib

High Stiffness Center Tread Blocks provide precise steering control and feedback.



#### Silencer Sipes

Help to prevent unwanted harmonic tread pattern sound.



#### Radial Sipes and Grooves

Radial direction sipes provide improved handling in dry conditions by locking together for greater tread block stiffness as well as resistance to hydroplaning by providing efficient water evacuation from the tire's contact patch.

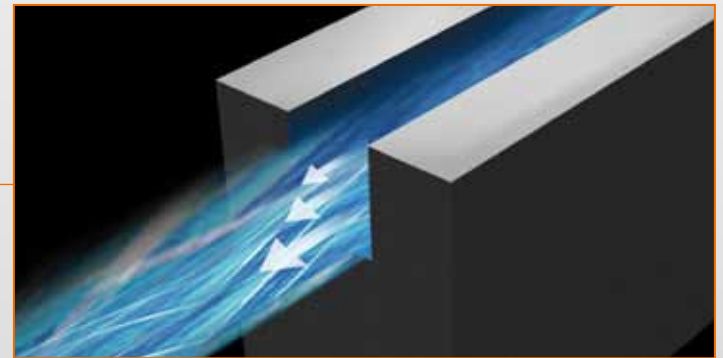


Design Features 1

## 4-Channel Circumferential Grooves

### 4-Channel Circumferential Grooves

Resists Hydroplaning and Improves Wet Condition Performance.



**Dynapro HP2**

**Hankook**  
driving emotion



## Aqua Slant Sipes & Groove

### Radial Sipes and Grooves

Radial direction sipes provide improved handling in dry conditions by locking together for greater tread block stiffness as well as resistance to hydroplaning by providing efficient water evacuation from the tire's contact patch.





## High Stiffness Center Rib

### High Stiffness Center Rib

High Stiffness Center Tread Blocks provide precise steering control and feedback.



## Silencer Sipes

### Silencer Sipes

A Silencer Sipe design helps to prevent unwanted harmonic tread pattern sound.



## Tire Structure

### High-Performance Silica Compound

Offers improved Wet & Dry Traction as well as Low Rolling Resistance for Improved Vehicle Fuel Economy

### Jointless Full Cover Reinforced Belt

Improves durability and braking performance

### Wide 2 Steel Belt Layer

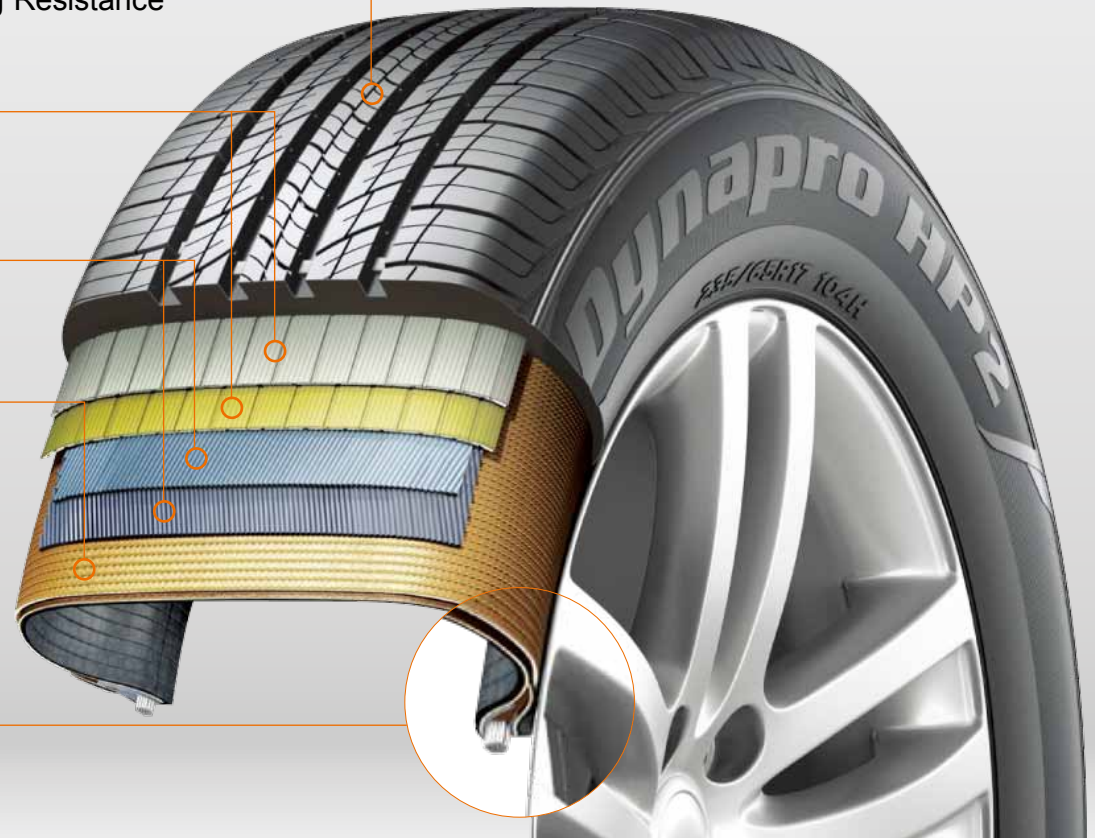
Better Dry/Wet Handling

### High Density Polyester Carcass

Better Steering & Handling Response

### Strong Single Strand Bead Wire

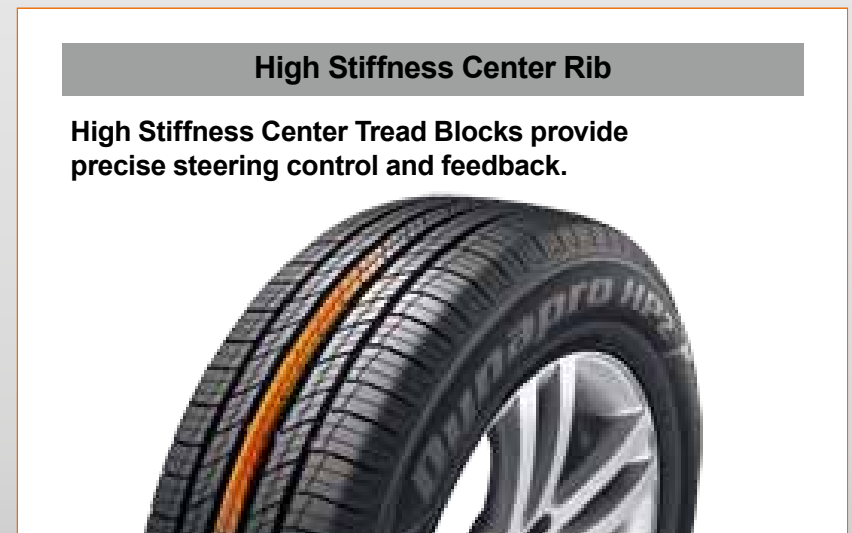
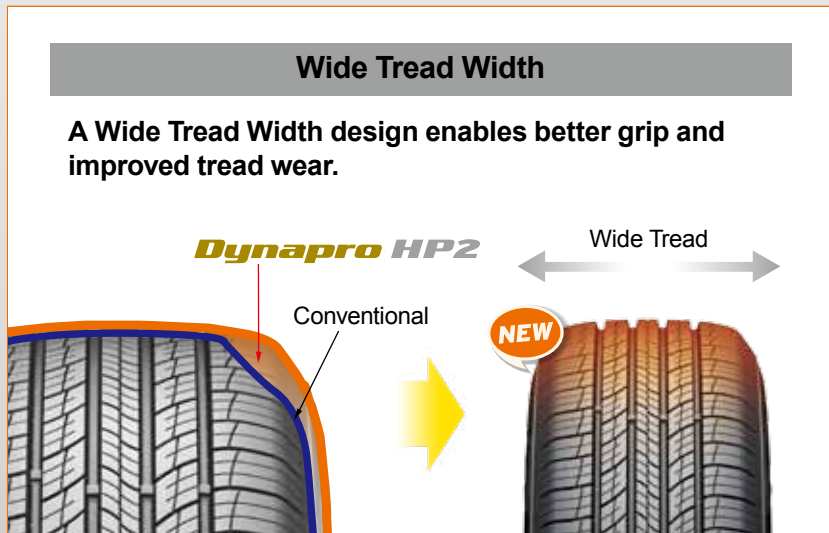
Improved Bead Uniformity and Durability



## Handling Performance

### Handling Performance

By incorporating an Optimized Tire Profile and High Stiffness Center Tread Blocks footprint pressure is dispersed evenly under various load conditions offering improved handling performance. Additionally, the use of 3D Kerf and 3D Shoulder Block technology furthers this impressive handling performance.

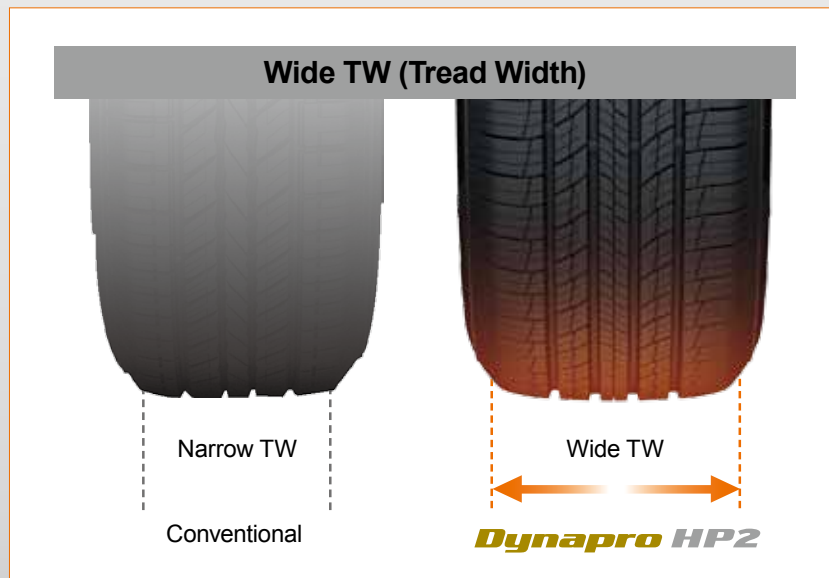




## Braking Performance

### Braking

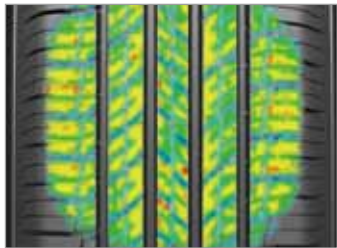
The Dynapro HP2 provides improved braking performance by incorporating a Wide Tread Width and Optimized Footprint Shape design which allows tire loads and contact pressure to be distributed evenly to the road surface under various braking conditions.



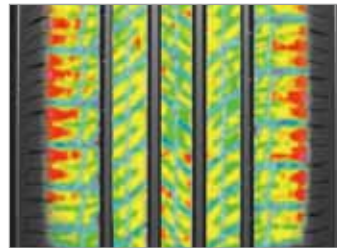
## Ride & Noise Performance

### Ride

Optimized tire profile and tread block stiffness contribute to improved ride characteristics.



100% Load (663kg)



140% Load (928kg)

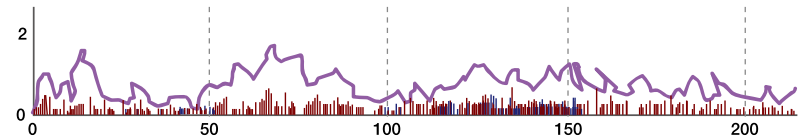
- Test Condition  
(Rim : 7.0J x 17, Air Pressure : 2.0kg/cm<sup>2</sup>)

### Noise

Silencer Sipes help to prevent unwanted harmonic tread pattern sound.



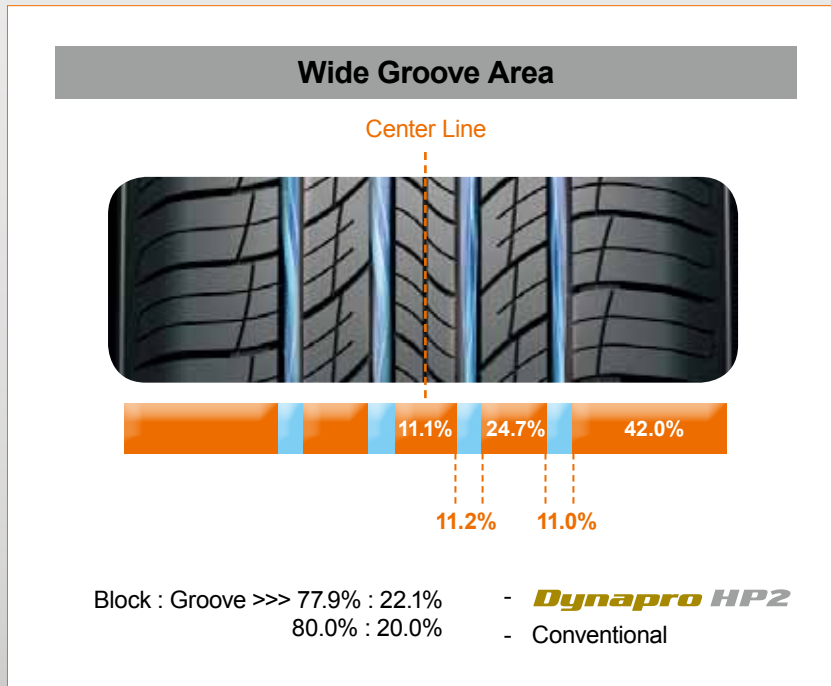
- Silencer Sipes  
Prevents harmonic tread pattern sound.



## Hydroplaning Performance

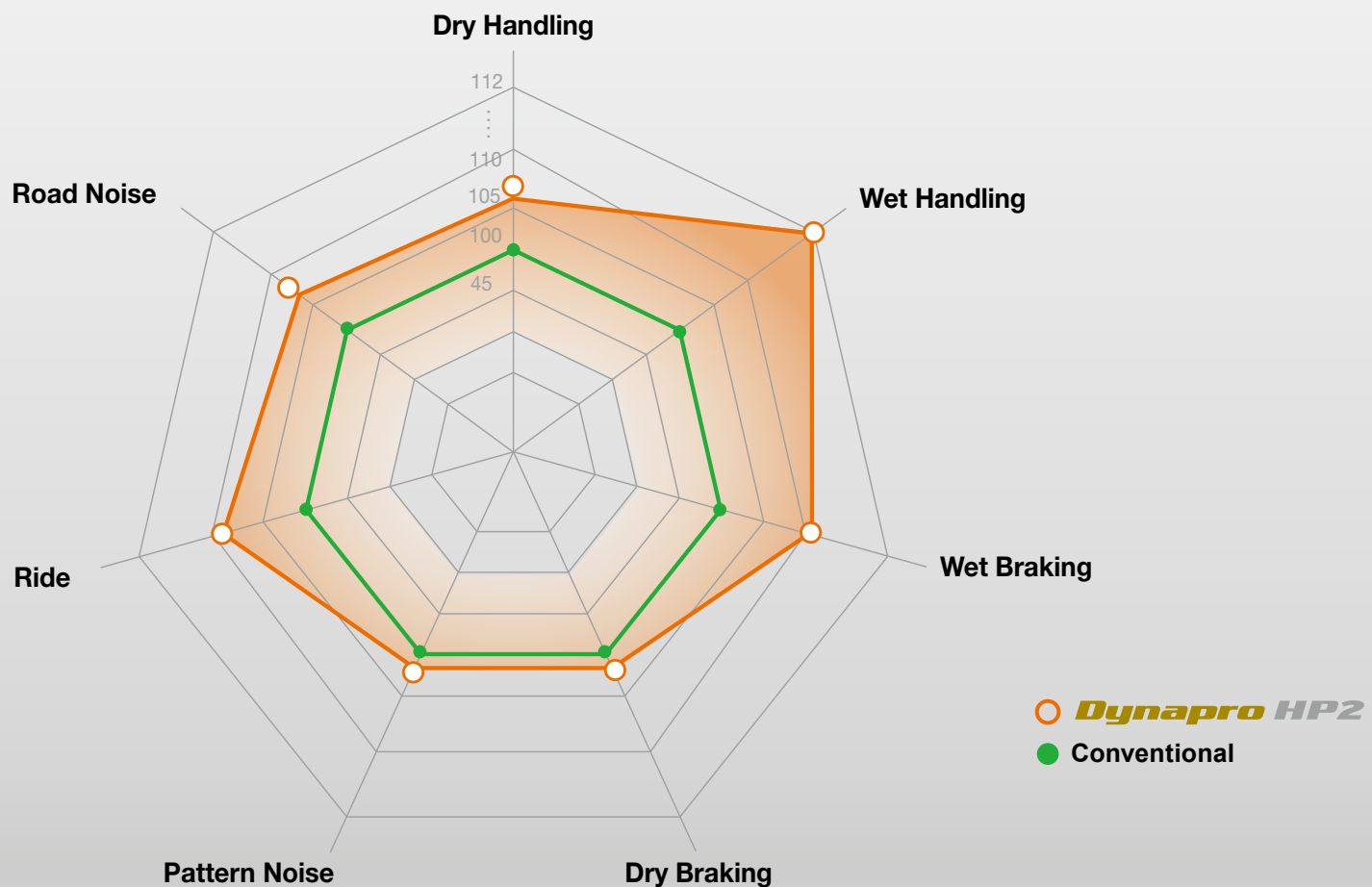
### Hydroplaning

4 Wide Circumferential Grooves and an Optimized Profile deliver outstanding water channeling capability to help resist hydroplaning and improve wet condition performance.



Test Results

**Performance**





## Available Sizes

S-Code	Size	L / I & SS	Measuring Rim	Rim Width Range	Max. Load		Overall Diameter	Section Width	Tread Width	Tread Depth	Revs/ Mile
					Air	Load					
1014142	235/60R16H	100H	7.0	6.5-8.5	51	1,764	27.0	9.4	7.4	10.7	746
1014138	255/65R16H	109H	7.5	7.0-9.0	51	2,271	28.9	10.2	8.0	10.7	697
1014141	215/70R16H	100H	6.5	5.5-7.0	51	1,764	27.9	8.7	6.8	10.7	724
1014139	225/70R16H	103H	6.5	6.0-7.5	51	1,929	28.4	9.0	7.1	10.7	710
1014148	235/70R16H	106H	7.0	6.0-8.0	51	2,094	28.9	9.6	7.4	10.7	698
1014586	245/70R16H XL	111H	7.0	6.5-8.0	50	2,403	29.5	9.7	7.7	10.7	683
1014144	235/60R17V	102V	7.0	6.5-8.5	51	1,873	28.2	9.4	7.4	10.3	715
1014150	255/60R17V	106V	7.5	7.0-9.0	51	2,094	29.0	10.2	8.0	10.3	695
1014145	225/65R17H	102H	6.5	6.0-8.0	51	1,874	28.6	9.0	7.1	10.7	705
1014146	235/65R17V XL	108V	7.0	6.5-8.5	50	2,204	29.1	9.4	7.4	10.7	694
1014585	245/65R17H XL	111H	7.0	7.0-8.5	50	2,403	29.6	9.8	7.7	10.7	682
1015261	235/50R18V	97V	7.5	6.5-8.5	51	1,609	27.3	9.7	7.8	10.2	739
1015262	235/55R18V	100V	7.5	6.5-8.5	51	1,764	28.1	9.6	7.8	10.2	717
1015264	255/55R18V XL	109V	8.0	7.0-9.0	50	2,271	29.1	10.4	8.4	10.2	694
1014129	235/60R18V XL	107V	7.0	6.5-8.5	50	2,149	29.3	9.5	7.4	10.7	690
1014133	245/60R18H	105H	7.0	7.0-8.5	51	2,039	29.6	9.7	7.7	10.3	682
1015303	255/60R18V XL	112V	7.5	7.0-9.0	50	2,469	30.1	10.1	8.0	10.7	671
1015266	265/60R18V	110V	8.0	7.5-9.5	51	2,337	30.5	10.6	8.3	10.7	661
1015304	275/60R18H	113H	8.0	7.5-9.5	51	2,535	30.9	11.3	8.7	10.7	653
1015268	285/60R18V	116V	8.5	8.0-10.0	51	2,756	31.5	11.5	9.0	10.7	641
1015263	235/65R18H	106H	7.0	6.5-8.5	51	2,094	30.0	9.4	7.4	10.7	672
1015267	275/65R18H	116H	8.0	7.5-9.5	51	2,756	32.0	11.0	8.7	10.7	631
1015265	P255/65R18H	109H	7.5	7.0-9.0	51	2,271	31.1	10.2	8.0	10.7	648
1015269	235/50R19V	99V	7.5	6.5-8.5	51	1,709	28.3	9.6	7.8	10.2	713
1015272	255/50R19H XL	107H	8.0	7.0-9.0	50	2,150	29.1	10.3	8.4	10.2	694
1015270	235/55R19V XL	105V	7.5	6.5-8.5	50	2,039	29.3	9.6	7.8	10.2	690
1015271	245/55R19H	103H	7.5	7.0-8.5	51	1,929	29.6	10.0	8.1	10.2	681
1015396	255/55R19V XL	111V	8.0	7.0-9.0	50	2,403	30.0	10.4	8.4	10.2	672
1015273	P255/60R19H	108H	7.5	7.0-9.0	51	2,205	31.2	10.5	8.0	10.7	647
1015275	245/50R20V	102V	7.5	7.0-8.5	51	1,874	29.7	10.0	8.1	10.2	680
1015276	255/50R20V XL	109V	8.0	7.0-9.0	50	2,271	29.1	10.3	8.4	10.2	694
1015277	265/50R20V	107V	8.5	7.5-9.5	51	2,150	30.5	10.9	8.7	10.2	662
1015279	285/50R20V	112V	9.0	8.0-10.0	51	2,469	31.3	11.7	9.4	10.2	646
1015274	235/55R20H	102H	7.5	6.5-8.5	51	1,874	30.2	9.6	7.8	10.2	669
1015278	275/60R20H	115H	8.0	7.5-9.5	51	2,679	33.0	11.0	8.7	10.7	612

*Memo*

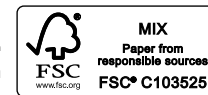
---



*Be Safe...*

***Air 'Em UP***

This information is printed on FSC® certified paper using soy ink. \*FSC®: This mark is awarded to products made of wood produced through responsible forestry.



**U.S. Headquarters** 1450 Valley Road, Wayne, New Jersey 07470 Tel: 1-800-HANKOOK, Fax: 1-800-TIRES-OK

**[hankooktireusa.com](http://hankooktireusa.com)**