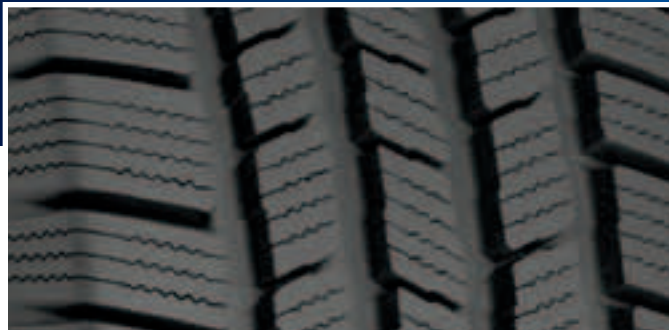


## MICHELIN® LTX® M/S<sup>2</sup>

**Our Best-Selling Light Truck Tire** — offers an exceptional combination of performances for light trucks and SUVs.



STOPPING DISTANCE	LONGEVITY	SNOW TRACTION
<b>STOPS UP TO</b> <b>7'</b> SHORTER IN WET CONDITIONS THAN LEADING COMPETITORS <sup>1</sup>	<b>LASTS UP TO</b> <b>20,000</b> MILES LONGER THAN LEADING COMPETITORS <sup>2</sup>	<b>8%</b> MORE BITING EDGES THAN THE MICHELIN® LTX® M/S TIRE

**Stops up to 7 Feet Shorter than Leading Competitors.<sup>1</sup>** New silica tread compounds and better lateral water evacuation to help you stop 7 feet sooner than the leading competitor's tire.

**Better Snow Traction than the Legendary MICHELIN® LTX® M/S Tire.** Greater density of full depth 3-D Active Sipes allow 8% more biting edges than the MICHELIN® LTX® M/S tire.

**Lasts up to 20,000 More Miles than Leading Competitors.<sup>2</sup>** The new 3-D Active Sipes and optimized contact patch of MaxTouch Construction™ combine to deliver 20,000 more miles.



3-D Active Sipes



With MaxTouch Construction™



Without MaxTouch Construction™

### Popular Replacement Market Fits:

Honda Ridgeline  
 Chevrolet Silverado  
 GMC Sierra  
 Ford F-150



The MICHELIN® GREEN X<sup>®</sup> marking guarantees a level of energy efficiency among the highest in the market and reduced CO<sub>2</sub> emissions while maintaining all the legendary Michelin advantages of long wear, safety and other performances.



<sup>1</sup> Based on third-party wet braking test results for LT-Metric sizes versus Bridgestone® Dueler H/T 684 II tires and Goodyear® Wrangler® SA tires.

<sup>2</sup> Based on third-party wear test results for P-Metric sizes versus Bridgestone® Dueler H/T 684 II tires and Goodyear® Fortera® TT tires.



MICHELIN® LTX® M/S<sup>2</sup>

Tire Size	Details	Service Description	Sidewall	MSPN	Rim Width Range (inches)	Section Width on Measuring Rim Width (inches)	Overall Diameter	Tread Depth (in/32nds)	Rev/ Mile @ 45 mph	Max. Load Single (lbs@psi)	Max. Load Dual (lbs@psi)	UTQG	O.E. Fitments	MICHELIN® LTX® M/S Fitments
P215/75R15		100S	ORWL	23526	5.5 - 7.0	8.6 on 6.0	27.6	13.0	754	1584@35†		500/A/B		•
P225/70R15		100S	ORWL	48079	6.0 - 7.5	9.0 on 6.5	27.4	13.0	765	1594@35†		500/A/B	MA	•
P225/75R15		102S	ORWL	76017	6.0 - 7.5	9.0 on 6.0	28.3	13.0	741	1703@35†		500/A/B		•
P235/70R15		102S	ORWL	97679	6.0 - 8.0	9.4 on 7.0	27.9	13.0	746	1724@35†		500/A/B		•
P235/75R15/XL		108T	ORWL	36210	6.0 - 8.0	9.2 on 6.5	28.8	12.0	721	1985@50†		720/A/A		
P215/70R16		99S	ORWL	60041	5.5 - 7.0	8.7 on 6.5	27.8	13.0	755	1554@35†		500/A/B		•
P225/70R16		101T	ORWL	11443	6.0 - 7.5	9.0 on 6.5	28.4	12.0	732	1654@44†		720/A/A		
P235/70R16		104T	ORWL	07253	6.0 - 8.0	9.4 on 7.0	28.9	12.0	718	1804@44†		720/A/A		
P235/75R16/XL		109T	ORWL	33858	6.0 - 8.0	9.3 on 6.5	29.8	12.0	697	2065@50†		720/A/A		
P245/70R16		106T	ORWL	35177	6.5 - 8.0	9.7 on 7.0	29.5	12.0	704	1904@44†		720/A/A		
P245/75R16		109T	ORWL	28525	6.5 - 8.0	9.7 on 7.0	30.4	12.0	683	2065@44†		720/A/A		
P255/65R16		106T	BSW	11391	7.0 - 9.0	10.2 on 7.5	29.0	12.0	716	1904@44†		720/A/A		
P255/70R16		109T	ORWL	23111	6.5 - 8.5	10.2 on 7.5	30.1	12.0	691	2065@44†		720/A/A		
P265/70R16		111T	ORWL	10302	7.0 - 9.0	10.7 on 8.0	30.6	12.0	679	2185@44†		720/A/A		
P265/75R16		114T	ORWL	00981	7.0 - 9.0	10.5 on 7.5	31.6	12.0	657	2365@44†		720/A/A		
P275/70R16		114H	BSW	98835	7.0 - 10.0	11.1 on 8.0	31.3	12.0	666	2365@44†		440/A/B	T	•
P275/70R16		114S	BSW	43428	7.0 - 10.0	11.1 on 8.0	31.3	12.0	666	2365@35†		500/A/B	L, T	•
P235/70R17/XL		108T	BSW	01721	6.0 - 8.0	9.4 on 7.0	30.0	12.0	693	2005@50†		720/A/A		
P235/75R17		108T	BSW	17502	6.0 - 8.0	9.3 on 6.5	30.9	12.0	674	2005@44†		720/A/A		
P245/65R17		105T	BSW	35551	7.0 - 8.5	9.6 on 7.0	29.7	11.0	700	1854@44†		440/A/B	HO	•
P245/70R17		108T	ORWL	91940	6.5 - 8.0	9.8 on 7.0	30.6	12.0	681	2005@44†		720/A/A		
P255/65R17		108T	ORWL	18907	7.0 - 9.0	10.2 on 7.5	30.1	12.0	691	2005@44†		720/A/A		
P255/70R17		110T	ORWL	00088	6.5 - 8.5	10.2 on 7.5	31.1	12.0	669	2125@44†		720/A/A		
P265/65R17		110T	ORWL	25979	7.5 - 9.5	10.7 on 8.0	30.6	12.0	681	2125@44†		720/A/A		
P265/70R17		113T	ORWL	09607	7.0 - 9.0	10.7 on 8.0	31.7	12.0	657	2305@44†		720/A/A		
P245/60R18		104T	BSW	13192	7.0 - 8.5	9.8 on 7.0	29.6	11.0	703	1804@44†		440/A/B	HO	•
P265/60R18		109T	ORWL	11631	7.5 - 9.5	10.7 on 8.0	30.5	12.0	682	2065@44†		720/A/A		
P265/65R18		112T	BSW	02633	7.5 - 9.5	10.7 on 8.0	31.5	12.0	659	2245@44†		720/A/A		
P265/70R18		114T	ORWL	28689	7.0 - 9.0	10.7 on 8.0	32.6	12.0	637	2365@44†		720/A/A		
P275/65R18		114T	ORWL	79828	7.5 - 9.5	11.0 on 8.0	32.1	12.0	648	2365@44†		720/A/A		
P275/55R20		111T	BSW	22093	7.5 - 9.5	11.2 on 8.5	31.9	12.0	652	2185@44†		720/A/A		
P275/60R20		114T	BSW	75433	7.5 - 9.5	10.9 on 8.0	32.9	12.0	630	2365@44†		720/A/A		
LT235/75R15/C		104/101R	ORWL	78868	6.0 - 7.0	9.5 on 6.5	28.8	13.0	727	1985@50	1820@50			•
30x9.50R15/C		104R	ORWL	09418	6.5 - 8.5	9.6 on 7.0	29.6	15.0	706	1985@50				•
31x10.50R15/C		109R	ORWL	24798	7.0 - 9.0	11.1 on 9.0	30.8	15.0	679	2270@50				•
LT215/85R16/E		115/112R	BSW	02397	5.5 - 7.0	8.5 on 6.0	30.3	13.5	684	2680@80	2470@80			
LT225/75R16/E		115/112R	ORWL	65141	6.0 - 7.0	8.8 on 6.0	29.4	15.0	709	2680@80	2470@80		F	•
LT225/75R16/E		115/112R	BSW	25516	6.0 - 7.0	8.8 on 6.0	29.4	15.0	709	2680@80	2470@80		F	•
LT235/85R16/E		120/116R	BSW	27679	6.0 - 7.5	9.2 on 6.5	31.7	13.5	656	3042@80	2778@80			
LT235/85R16/E	GREEN X®	120/116R	ORWL	19595	6.0 - 7.5	9.3 on 6.5	31.7	13.5	656	3042@80	2778@80			
LT245/75R16/E		120/116R	BSW	22606	6.5 - 8.0	9.8 on 7.0	30.7	15.0	681	3042@80	2778@80		DC	•
LT245/75R16/E		120/116R	ORWL	21676	6.5 - 8.0	9.7 on 7.0	30.4	13.5	683	3042@80	2778@80			
LT265/75R16/E	GREEN X®	123/120R	BSW	23388	7.0 - 8.0	10.5 on 7.5	31.7	13.5	657	3415@80	3085@80			
LT265/75R16/E	GREEN X®	123/120R	ORWL	30217	7.0 - 8.0	10.5 on 7.5	31.7	13.5	657	3415@80	3085@80			
LT285/75R16/E		126/123R	ORWL	21272	7.5 - 9.0	11.2 on 8.0	32.8	13.5	634	3750@80	3415@80			
LT235/80R17/E		120/117R	ORWL	91504	6.0 - 7.5	9.2 on 6.5	31.8	13.5	654	3085@80	2835@80			
LT245/70R17/E		119/116R	BSW	00644	6.5 - 8.0	9.7 on 7.0	30.5	13.5	681	3000@80	2755@80			
LT245/75R17/E		121/118R	BSW	31733	6.5 - 7.5	9.7 on 7.0	31.5	13.5	660	3195@80	2910@80			
LT265/70R17/E		121/118R	BSW	14221	7.0 - 8.5	10.7 on 8.0	31.6	13.5	657	3195@80	2910@80			
LT265/70R17/E	GREEN X®	121/118R	ORWL	97723	7.0 - 8.5	10.7 on 8.0	31.7	13.5	657	3195@80	2910@80			
LT285/70R17/D	GREEN X®	121/118R	ORWL	11305	7.5 - 9.0	11.5 on 8.5	32.8	13.5	635	3195@65	2910@65			
LT275/65R18/E		123/120R	ORWL	01137	7.5 - 9.0	10.9 on 8.0	32.0	13.5	648	3415@80	3085@80			
LT275/70R18/E	GREEN X®	125/122R	ORWL	04035	7.0 - 8.5	11.0 on 8.0	33.2	13.5	627	3640@80	3305@80			

Original Equipment Key: DC = Chrysler, F = Ford, HO = Honda, L = Lexus, MA = Mazda, T = Toyota

XL = Extra Load

†Passenger sizes used in LT/SUV applications have reduced load capacity. This will differ from maximum load branded on the tire sidewall.

See pages 100 – 101 for important product information.